

City Theater of Independence presents

BLITHE SPIRIT

by Noel Coward

Directed by Adam Arterbridge

By special arrangement with Samuel French

November 5, 6, 7, 13, 14, 15 2015





Board of Directors and Committee Chairs

Joyce Stone - President

Michael Masterson - Vice President of Production

Jackie Cain - Vice President of Operations

David Calkins - Treasurer

Mary Morris - Secretary

R.J. Parish - Season Production Manager

Patti Shockley - Box Office Chair

Marcia Brownlee - Membership Chair

Norita Taylor - Marketing and Public Relations

Larry Morris - Hospitality

Become a donor to CTI

Donation Levels:

Stage Hand-\$50

Designer-\$100

Stage Manager-\$200

Director-\$500

Producer-\$1000

Executive Producer-\$1500



Heartland Medical Care, P.C.

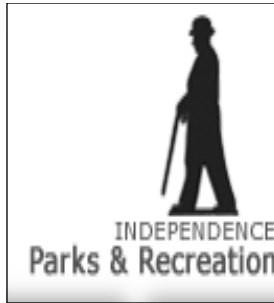
10010 Truman Road

Independence, Mo. 64052

James V. Linnick, D.O.

Michael G. Wells, D.O.

816-252-7800



City Theatre of Independence is a proud member of the American Association of Community Theatres (AACT) and the Independence Parks and Recreation Dept.

www.aact.org

www.ci.independence.mo.us/parksandrec

CTI is also a member of the **Independence Attractions Coalition**.

**City Theatre of Independence
Powerhouse Theatre
Roger T. Sermon Center**

816-325-7367

Special thanks to Designer Donor
Elizabeth Scott
THANK YOU

PUPPETRY ARTS INSTITUTE

1025 E. Winner Rd. Independence, MO 64052 USA

816. 833.9777

www.hazelle.org



208 North Main Street
Independence, Mo. 64050
816-461-5383



6

Ella's Embroidery

www.ellasembroidery.com

**The
Examiner**

Independence—Blue Springs—Grain Valley

www.examiner.net

FAST SIGNS

3801 S. Noland Road
Independence, MO 64055

816-252-0909

Bingham-Waggoner Estate

Christmas Tours

November 27 - December 30

(closed December 23rd, 24th & 25th)

"Deck the Halls" is the theme this Christmas at the beautiful Bingham-Waggoner Estate and to say we will be decked out is an understatement!

We can't wait for you to see us!

Mon - Sat 10 a.m. to 4 p.m.

Sun 1 p.m. to 4 p.m.

313 West Pacific

Independence, MO 64051

Powerhouse Theatre Foundation

Powerhouse Theatre Foundation is an umbrella organization which includes and benefits three community theatre organizations which operate out of the Roger T. Sermon Community Center: City Theatre of Independence, Children's Performing Theatre and Encore Theatre.

City Theatre of Independence

www.CityTheatreofIndependence.org

ENCORE

www.EncoreTheatreIndepMo.org

Children's Performing Theatre

Facebook: [Childrens-Performing-Theatre-of-Independence-Mo](https://www.facebook.com/Childrens-Performing-Theatre-of-Independence-Mo)

Join CTI

If you enjoy seeing our performances, you might also enjoy being a member of CTI . There are many opportunities to be part of the organization. In addition to acting, there are crew members on each production to run lights or sound, to help with properties and set changes, or costume design and set construction.

CTI is a member-run organization, where you can be part of the decision making process. Questions? Contact citytheatreofindependence@gmail.com.

SOME FLAWED. SOME HOPEFUL.
ALL TARGETS.

www.facebook.com/captivesseries

CAPTIVES

A
BARON M. REDMAN
FILM

Mid-Life
Players

PRESENTS

THE
DROWSY
CHAPERONE
IN CONCERT!



THURSDAY-SATURDAY,
NOVEMBER 12-14, 2015, 7:30PM
SUNDAY, NOVEMBER 15, 2015, 2:00PM

TICKETS: <http://drowsymp.brownpapertickets.com>

JUST OFF BROADWAY THEATRE
3051 PENN VALLEY DR.
KANSAS CITY, MO 64108

<http://midlifeplayers.com>
<http://facebook.com/midlifeplayers>

A CHORUS LINE

A RETROSPECTIVE CONCERT!

THURSDAY-SATURDAY,
JANUARY 28-30, 2016, 7:30PM
SUNDAY, JANUARY 31, 2016, 2:00PM

JUST OFF BROADWAY THEATRE
3051 PENN VALLEY DR.
KANSAS CITY, MO 64108

<http://midlifeplayers.com>
<http://facebook.com/midlifeplayers>

SUBSCRIBE TO OUR NEWSLETTER

Visit this funky URL address and you will find an easy form to fill out and get updates on auditions, shows and other events. <http://eepurl.com/KFHn>

BLITHE SPIRIT

By Noel Coward

By special arrangement with Samuel French

CAST

(in order of appearance)

Edith.....Julie Miller

Ruth.....Lindsey Roland

Charles.....Damon Ekstrom

Dr. Bradman.....Alex Phillips

Mrs. Bradman.....Kim Hentges

Madame Arcati.....Patti Shockley

Elvira.....Briana Marxen-McCollom

SET BUILDERS

R.J. Parish, Norita Taylor, Mike Masterson, Joyce Stone, John Dempsey, David Hentges, Steve Kennedy, Andy Williams, Bradford Taylor. INSERT
MORE NAMES PER RJ

Act 1

Scene 1 - Before dinner on a summer evening.

Scene 2 - After dinner.

Act 2

Scene 1 - The next morning.

Scene 2 - Late the following afternoon.

Scene 3 - Early evening. A few days later.

Act 3

Scene 1 - After dinner. A few days later.

Scene 2 - Several hours later.

There will be a 15 minute intermission

NO VIDEO OR FLASH PHOTOGRAPHY

PRODUCTION CREW

Director.....Adam Arterbridge

Stage Manager.....Erin Brown

Scenic Design.....R.J. Parish

Lighting Design.....Chuck Cline

Sound Design.....Erin Brown

Properties Design.....Mindi Thompson

Costume Design.....Joyce Stone

DIRECTORS NOTES

As Noël Coward wrote *Blithe Spirit*, bombs were falling from the sky. The year was 1941, and with his London home and office destroyed in the Blitz, Coward took a seaside holiday. Over the course of six days, he produced what has come to be his most famous and widely-produced work, the play we present to you tonight. During an era where his countrymen were losing loved ones every day, England's premiere satirist crafted a play that dealt directly with death, that chose to stare mortality directly in the eye. It was a comedy, and it was a hit.

In the seventy-four years since this play premiered, *Blithe Spirit* has become a staple of the theatrical stage. Annual productions number in the hundreds, and the work typically appears as one of the top five most-produced plays among civic and academic theatres. Charles Condomine has been hilariously chased through his country home by the spirit of his first wife across stages worldwide, but in the mind of this director, it was time to take a bit of a different tack.

In recent years, as dramatic styles and genres have merged and influenced one another, we have seen the rise of the so called "comic thriller" or "horror comedy." Mixing chills with wit, works in this oeuvre seek to delight the audience by never knowing what to expect, a scream or a laugh, and it's in the spirit of this that tonight's production was founded. While *Blithe Spirit* is at heart a farce, we seek to honor the reality (or unreality) of the story by acknowledging that the supernatural can truly be a frightening thing. We've thrown in a dash of the unsettling into tonight's comedy cocktail.

(continue next page)

Director's Notes continued ...

How successful we are with this concoction is entirely up to our audience, but I hope you will appreciate the hard work and dedication that has brought this production to fruition. It's been my pleasure and honor to work with such a gifted, brave and creative group of performers. I am grateful for how they've risen to the occasion to create the somewhat unorthodox performances we present. Likewise, I am forever indebted to the talents of our production staff, whose individual expertise have made this production far more than the sum of its parts. As a director, I am truly humbled to be in such impressive company.

As I prepared to undertake this production, I was fascinated by the image of the author, seated at a typewriter with the ocean roaring outside, tapping out a masterpiece.

I'll leave you with the author's own words, in his imitable style, regarding the writing of this play:

"For six days I worked from eight to one each morning and from two to seven each afternoon. On Friday evening, May 9th, the play was finished and, disdaining archness and false modesty, I will admit that I knew it was witty, I knew it was well constructed, and I also knew that it would be a success."

It certainly has been.

-Adam Arterbridge



ADAM ARTERBRIDGE (DIRECTOR)

Adam is pleased to be directing his second production for City Theatre of Independence, having previously directed *Proof*. Recent productions directed include Steve Martin's *Picasso at the Lapin Agile*, Miller's *All My Sons*, Camolletti's *Boeing Boeing*, and Sondheim/Lapine's *Into the Woods*. Love and endless thanks to Lindsey, Dean, Mom & family and the entire JFL.

ACKNOWLEDGEMENTS AND SPECIAL THANKS

INSERT NAMES



ERIN BROWN (Stage Manager) Erin has most recently stage managed *Enchanted April* here at CTI, and *All My Sons* and *Boeing Boeing* at Summit Theatre Group. She is also a writer for the web series *Captives*, and her first short film, *The Voice in the Dark*, is currently in preproduction. She is thrilled to be working with such a talented cast, crew, and director. Shout-outs and much love to Grace and Baron for putting up with this theater nerd.

CAST – IN ALPHABETICAL ORDER



DAMON EKSTROM (Charles) - Damon is pleased to be making his return to the CTI stage after his previous experience in 2014 with *Dr. Jekyll and Mr. Hyde*. After taking a hiatus from acting, Damon has hit the ground running the past few years performing in shows and working on projects that have ran the gamut from Leavenworth to Kansas City. Damon hopes to one day work alongside his fellow talented CTI cast and crew again in the future.



Kim Hentges (Karen Wright)

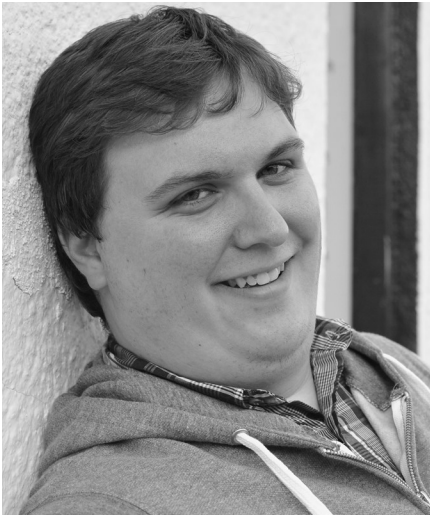
Kim is proud to be onstage at CTI again after recently playing Lottie Wilton in *Enchanted April*. Kim has been active in Kansas City theatre for 18 years. Some of her past favorite roles include Catherine in *Proof* and Corie in *Barefoot in the Park*. She also played in *All My Sons*, *The 39 Steps*, *Picnic* and *The Glass Menagerie*. She sends her love to Leo and extra special thanks to Matt and Audrey for their selflessness and support.



BRIANA MARXEN-MCCOLLOM (Elvira) - Briana, a graduate of UMKC's Theatre Program and a classically trained Mezzo-Soprano, has appeared at the Living Room, The MET, The Fishtank, Theatre In the Park, various Fringe Festivals and numerous films. Some favorite roles include Frauline Kost in *Cabaret*, Jennifer in *Skillet Tag*, Regan in *King Lear* and C in *Edward Albee's Three Tall Women*. She is delighted to appear in this production with such a wonderful cast and crew. Many thanks to Adam and Erin. All her love to Emerson. Hey.



JULIE MILLER (Edith) - Julie makes her first appearance at CTI. She has recently appeared in *Equus* and *Sordid Lives* at the Barn Players Theatre and several staged readings throughout the metro. She is a graduate of the University of Kansas with a degree in theatre. She is originally from Hutchinson, KS and would like to thank her new fiancé for all his endless love and support, the cast and Adam for putting up with her!



ALEX PHILLIPS (Dr. Bradman) - Alex has been on stage since a very young age, and feels most at home when he is on a stage expressing himself before an audience. He was most recently seen in the *Enchanted Forest* as Papa Bear, as Fred in *Oklahoma!* for Blue Springs City Theatre, and as Peachy in *The Last Night of Ballyhoo* on this exact stage. He is happy to be returning as Dr. George Bradman in this season's production of *Blithe Spirit*. He wants to thank this amazing cast, director, stage manager, and great crew for being a part of bringing this mystical show to life.



LINDSAY ROLAND (Ruth) - Lindsay is pleased to return to the City Theatre of Independence, where she previously played Rose in *Enchanted April* and Katherine in *The Taming of the Shrew*. This past summer she produced Ryan Scully's *Flicker* for the Fringe Festival followed by a turn as the Princess of France in *Love's Labour's Lost* at the Alcott Arts Center. Lindsay would like to thank Adam and the cast for providing her with such a fantastic environment to play in, and Zachary for his unconditional love and support and French fries.



PATTI SHOCKLEY (Madame Arcati) - Patti has loved working with all the great people at City Theatre over the years. Some of her favorite roles have been Mrs. Shinn in *The Music Man*, Marguerite in *Dearly Departed*, Mrs. Potts in *Picnic*, and Betty in *The Foreigner*. She recently directed *The Miss Firecracker Contest*, and then returned to acting in *Mouse-trap*, *The Last Night of Ballyhoo* and *Enchanted April*. She is finding this role of Madame Arcati to be most challenging, and hopes she does credit by those who have nailed it before her.

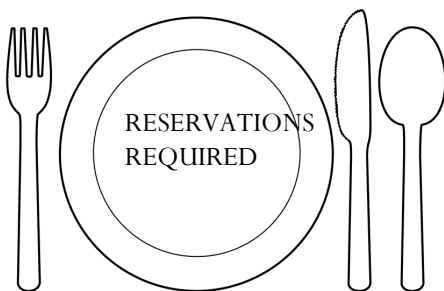
Dinner Theatre

Have you tried our dinner theatre? Enjoy a meal before a performance. The first Saturday night of each production features an optional dinner in the Sermon Center catered by Nadler's of Wellington, Mo.



DINNER THEATRE DATES

The Trip to Bountiful	January 9, 2016
Young Frankenstein	March 26, 2016 (price \$28)
Play It Again, Sam	June 4, 2016



PLAYWRIGHT FESTIVAL 2016



Each summer, City Theatre of Independence holds a festival featuring eight, original works. This year's Playwright Festival will be July 28-31, 2016.

Please carefully review the following guidelines to submit your short play(s):

- 1) The theme for 2016 is "The Road Not Taken."
- 2) Each play submitted must have no more than 4 characters, and no more than 4 set pieces.
- 3) Must run 10-15 minutes in length.
- 4) Plays with an excess of offensive language will not be accepted; if you have to ask, assume it's excessive.
- 5) **Submissions will only be accepted from January 1 through January 8, 2016.**
- 6) Only the first 75 plays received will be accepted for consideration.
- 7) Please email scripts to playwrightsubmissionscti@gmail.com. **IMPORTANT:** The script must have no identifying personal information attached to it. A separate cover sheet with all contact information, including the play title must be included. We will only notify playwrights that make the specified cut-off and we will not do any notifications after the quota has been filled. Playwrights that make the final chosen eight will be notified and production information will be sent. A compliance search will be conducted on each script.
- 8) Plays cannot be published or produced prior to June 1, 2016, nor be subject to any royalties.
- 9) No entry fee required

Plays that do not meet these guidelines will not be considered. Please note that plays will not be returned.



35 Seasons! 1980 - 2015

<p><u>1980-81</u> Plaza Suite, Curious Savage, Uncertain Samaritan, Music Revue 1, The Four Poster, The Odd Couple</p>	<p><u>1981-82</u> Arsenic & Old Lace, Music Revue 2, A Thousand Clowns, The Fantasticks, Dracula, Spirit of the Christmas Ornament, The Hobbit, Ten Little Indians, Little Women</p>	<p><u>1982-83</u> Harvey, 6 Rms Riv Vu, The Other Side, The Lion In Winter, A Christmas Carol, Winnie The Pooh, House of Blue Leaves, Once Upon A Mattress</p>
<p><u>1983-84</u> You're A Good Man, Charlie Brown, The Rainmaker, Alice In Wonderland, J.B., Life With Father, The Importance of Being Earnest</p>	<p><u>1984-85</u> On Golden Pond, 1776, The Emperor's New Clothes, Our Town, The Mousetrap, You Can't Take It With You</p>	<p><u>1985-86</u> Barefoot In The Park, The Glass Menagerie, Cinderella, Two By Two, Wait Until Dark, Shadowbox</p>
<p><u>1986-87</u> Bell, Book and Candle, Laura, Snow White, Joseph & The Amazing Technicolor Dreamcoat, One Flew Over The Cuckoo's Nest, The Buck Stops Here, Bus Stop</p>	<p><u>1987-88</u> Dial M For Murder, Happy Birthday Wanda June, Sleeping Beauty, God's Favorite, Side By Side By Sondheim, Enemy Of The People</p>	<p><u>1988-89</u> Tom Sawyer, Charlotte's Web, I Remember Mama, Close Ties, The Mystery of Edwin Drood</p>
<p><u>1989-90</u> Hay Fever, The Legend Of Sleepy Hollow, Cradle Song, Pippin, The Foreigner</p>	<p><u>1990-91</u> Death By Chocolate, Beauty & The Beast, Guy's & Dolls, Crimes Of The Heart, Noises Off</p>	<p><u>1991-92</u> Play It Again Sam, Winnie The Pooh, Blithe Spirit, Steel Magnolias, Oliver</p>
<p><u>1992-93</u> Arsenic & Old Lace, The Nerd, The Unexpected Guest, Odd Couple (female version), Fiddler On The Roof</p>	<p><u>1993-94</u> Rehearsal For Murder, Lend Me A Tenor, Anything Goes, Come Blow Your Horn, The Royal Family</p>	<p><u>1994-95</u> Born Yesterday, The Cemetery Club, Harvey, A Funny Thing Happened On The Way To The Forum, Witness For The Prosecution</p>
<p><u>1995-96</u> Forty Carats, The Rainmaker, Night Watch, Little Shop Of Horrors, I Hate Hamlet</p>	<p><u>1996-97</u> Something's Afoot, The Lion In Winter, Heaven Can Wait, Mame, Corpse</p>	<p><u>1997-98</u> Lost In Yonkers, Darkside, Greetings, Annie Get Your Gun, Cat's Cradle</p>

<p><u>1998-99</u></p> <p>Rumors, A Lie Of The Mind, The Importance Of Being Earnest, Camelot, The Crucifer Of Blood</p>	<p><u>1999-2000</u></p> <p>Moon Over Buffalo, Cole, Talley's Folly/Talley & Son, A Little Night Music, Amadeus</p>	<p><u>2000-01</u></p> <p>A Midsummer's Night Dream, My Three Angels, Nunsense, An Ideal Husband, Marriage Of Figaro</p>
<p><u>2001-02</u></p> <p>Catch Me If You Can, The Diary Of Anne Frank, Murder At The Howard Johnson's, The Sound Of Music, The Sunshine Boys</p>	<p><u>2002-03</u></p> <p>Squabbles, Dracula, Hedda Gabler, The Wizard Of Oz, The Company Of Wayward Saints</p>	<p><u>2003-04</u></p> <p>You Can't Take It With You, A Murder Is Announced, The Man Of La Mancha, All My Sons, The School For Scandal</p>
<p><u>2004-05</u></p> <p>The Musical Comedy Murders of 1940, Death-trap, Private Lives, Hello Dolly, Picnic</p>	<p><u>2005-06</u></p> <p>Plaza Suite, An Inspector Calls, The Delany Sisters, Pirates of Penzance, Dear-ly Departed</p>	<p><u>2006-07</u></p> <p>Noises Off, Sleuth, Inventing Van Gogh, Nothing But The Truth, The Music Man</p>
<p><u>2007-08</u></p> <p>Funny Money, A Shot In The Dark, Kiss Me Kate, The Lilies Of The Field, Social Security</p>	<p><u>2008-09</u></p> <p>To Kill A Mockingbird, I'll Be Back Before Midnight, Over The Tavern, Marcus Is Walking, The King & I</p>	<p><u>2009-10</u></p> <p>Escanaba In Da Moonlight, Chain Of Circumstances, King O' The Moon, Chicago, Arcadia</p>
<p><u>2010-11</u></p> <p>The Boys Next Door Death Of A Salesman Last Mass At St.Casimir's Rodgers & Hammerstein's Cinderella;Almost, Maine</p>	<p><u>2011-12</u></p> <p>The Foreigner, Suburb, A Streetcar Named Desire, Working A Nice Family Gathering</p>	<p><u>2012-13</u></p> <p>Little Women, The Nerd, Proof, Once Upon A Mattress, On Golden Pond</p>
<p><u>2013-14</u></p> <p>The Miss Firecracker Contest, The Mousetrap The Complete Works of Wm Shakespeare – Abridged, Little Shop Of Horrors , Pride and Prejudice</p>	<p><u>2014-15</u></p> <p>The Taming of the Shrew Jekyll & Hyde, The Last Night of Ballyhoo Enchanted April Seussical</p>	<p><u>This Season!</u></p> <p>The Children's Hour Blithe Spirit The Trip to Bountiful Young Frankenstein Play It Again, Sam</p>



Important Dates

Auditions

Young Frankenstein
Jan. 8, 9 at 7 p.m.
Sermon Center

This Season!

The Trip to Bountiful - January 2016

Young Frankenstein - March 2016

Play It Again, Sam - June 2016

Visit our website for performance dates

Next CTI Business Meeting

Thursday, Dec. 3, 7 p.m. Sermon Center

www.CityTheatreofIndependence.org

Facebook/City.Theatre.of.Independence